

CARLY & STEVE

WINDSOR LODGE

PIANO ROOM

LURIE CANSFIELD

INTERIOR DESIGN | PAINTING & PANELLING

www.lauriecansfield.com | 07542 555 208

CONTENTS

Page 3. Colours & Concept

Page 7. Mood Board: WILD 🤪

Page 8. Mood Board: MILD 😎

Page 9. Shopping List

COLOURS & CONCEPT

Symmetry. “Wes Anderson is renowned for using symmetry in his films, which **creates a sense of harmony and balance**, and contributes to the fanciful, beguiling appearance of his films. In almost every shot there is this symmetry.”

Formalism. “Formalism describes the position that **the most important aspect of a work of art is its form** – the way it is made and its purely visual aspects – rather than its narrative content or its relationship to the visible world.”

It's been pretty fascinating diving in to the world of Wes (that is a Life Aquatic pun) and exploring the colour palettes, curious objects and low contrast look. The theme of pinks, blues, bright orange and the occasional yellow runs through this universe, and luckily they all compliment each other perfectly. Beyond that it's actually the concept of symmetry and formalism that I think could make the piano room a special place to be.

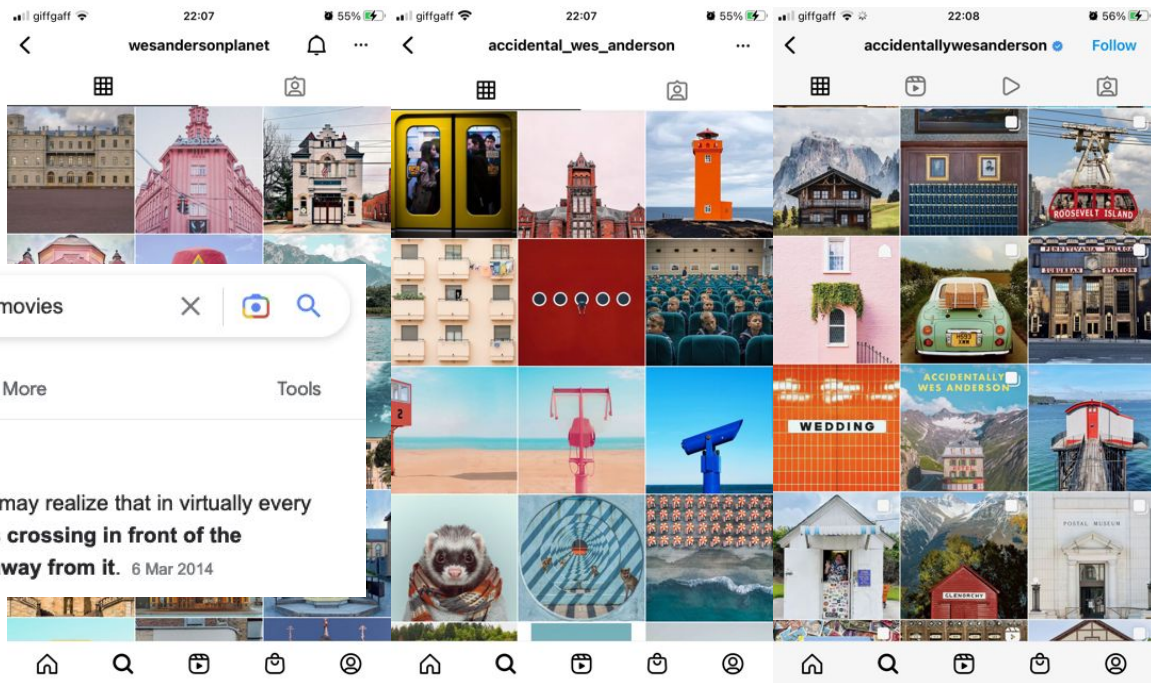


COLOURS & CONCEPT

The symmetry in Wes Anderson's films goes beyond the rooms, buildings and landscapes. The actors actually move around in straight lines.* I'm not suggesting you do that (or make your children do it) but this has inspired the layout of the room - mirroring the piano and sofa, mirroring the chairs in the window, and yes, mirroring the mirrors!

What I take from the formalism theme is that because this room has multiple potential uses and doesn't need to serve one purpose (like a lounge or kitchen) it offers an opportunity to put form before function.

Of course you're going to be using the room functionally - playing piano, guitar, sitting in the window reading etc - but let's create it a work of art to do it all in.



*

Google

actors movements in wes anderson movies

All Images Videos News Books More

Tools

About 2,190,000 results (0.77 seconds)

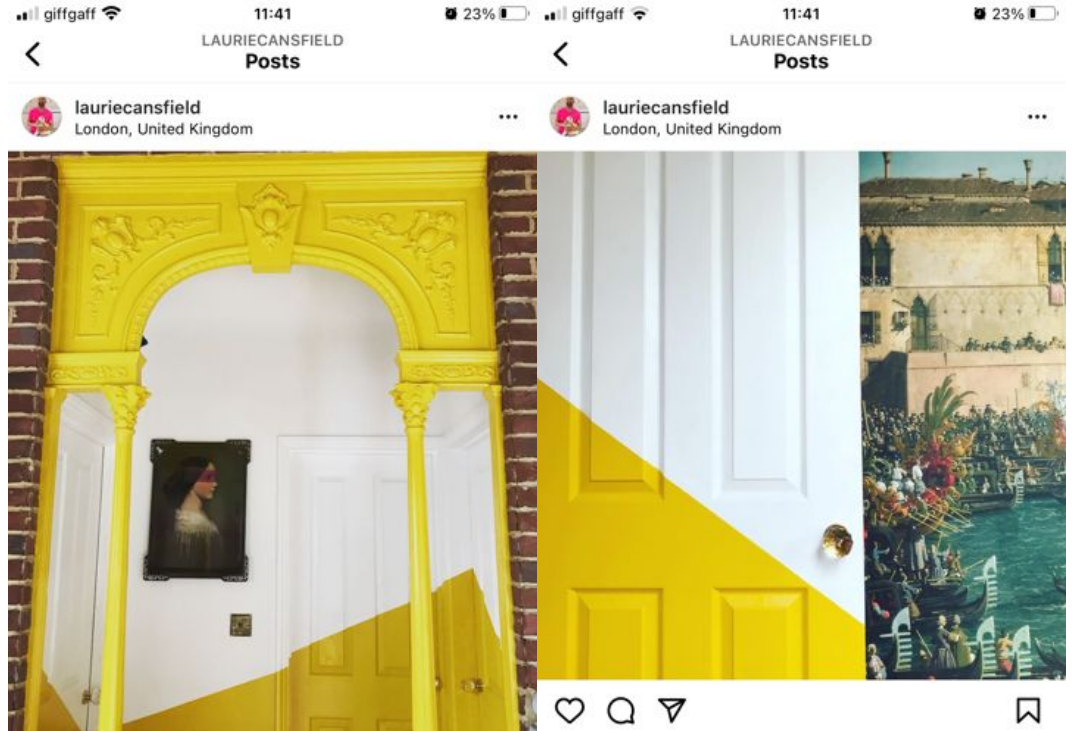
The characters are blocked so exactly, in fact, that you may realize that in virtually every shot, the actors move either in horizontal straight lines crossing in front of the camera or in vertical straight lines walking toward or away from it. 6 Mar 2014

COLOURS & CONCEPT

I know you were both quite keen to include paint effects like the ones here, and I did intend to use these in the WILD moodboard.

But... I'm so certain that the straight lines and mirror images are right for the piano room that the choice between mild and wild in this case should be purely based on colours. (Plus there's plenty of space to use diagonals and asymmetry in the lounge or hallway).

Please refer to **The Anderson Scale™** below.



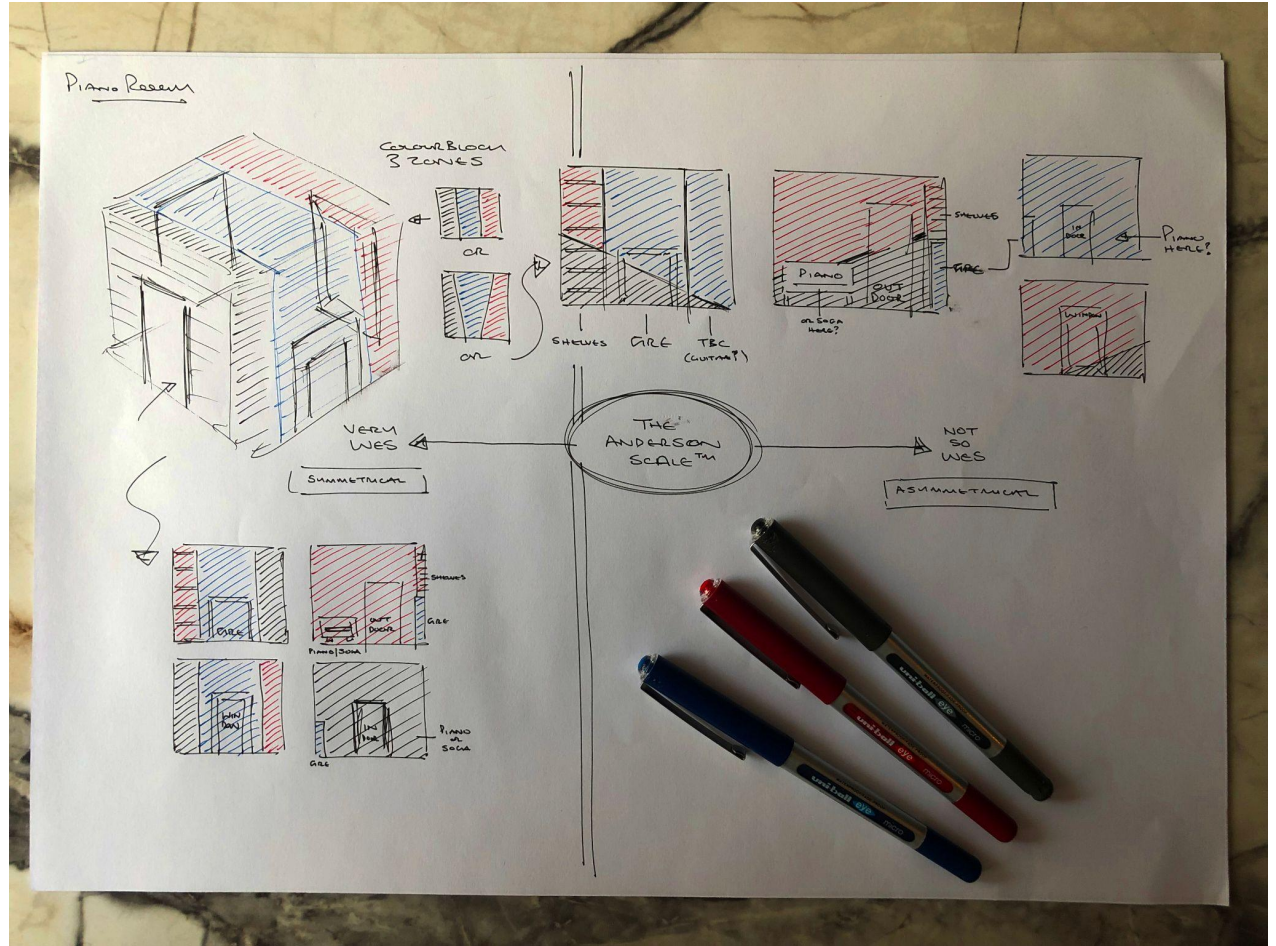
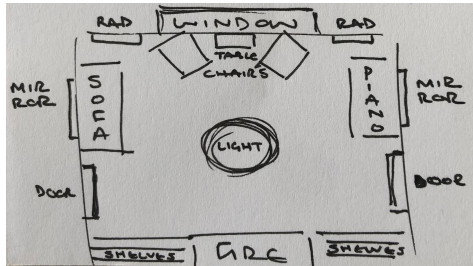
What does diagonal symbolize?

Diagonal lines convey a **feeling of movement**. Objects in a diagonal position are unstable. Because they are neither vertical nor horizontal, they are either about to fall or are already in motion. The angles of the ship and the rocks on the shore convey a feeling of movement or speed in this stormy harbor scene.

THE ANDERSON SCALE™

Straight = Very Wes

Diagonal = Not so Wes



MOOD BOARD

WILD 🤪



mylands.com

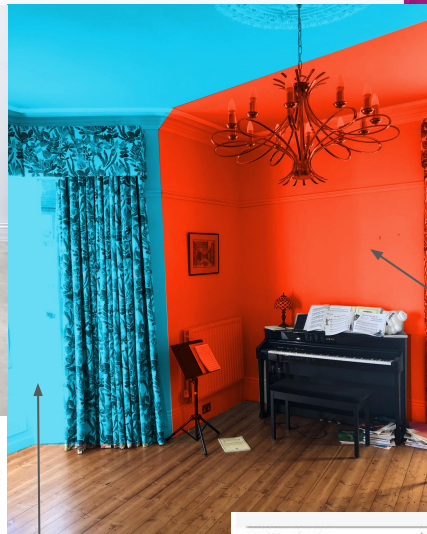
Hottest Barbiecore Pink - FTT-006™

Shop now

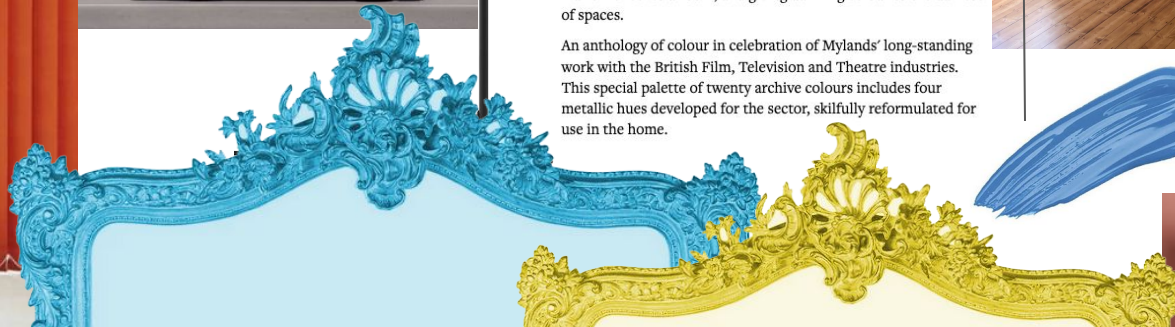


FTT-017™ is a stunningly bold, bright blue paint. It has great richness and is beautifully clean, perfect for bringing a striking maritime feel to a room, and giving dazzling colour to the darkest of spaces.

An anthology of colour in celebration of Mylands' long-standing work with the British Film, Television and Theatre industries. This special palette of twenty archive colours includes four metallic hues developed for the sector, skilfully reformulated for use in the home.

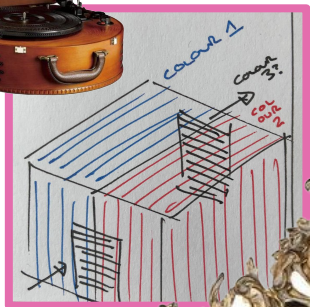


Hot, tangy and bang on trend, Brazil embraces exotic vibrance. This beautiful stand out colour screams hot summers and carnival styling.



MOOD BOARD

MILD 🕶️



This modern green paint with a turquoise feel is perfect for creating an exciting focal point within a space. It is bright, but has a lot of depth and gives a completely unique tone.

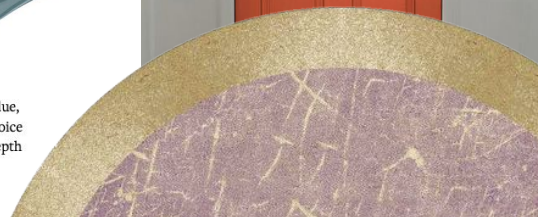


BURLINGTON ARCADE™ NO. 216

★★★★☆ 2 Reviews

A robust shade influenced by this historic shopping arcade in Central London. Light Grey Primer and Undercoat.

The colour of this paint sits somewhere between green and blue, with an instantly fresh appearance. It can be a bold, bright choice for any modern home, or paired with darker shades to create depth and intimacy.



SHOPPING LIST

The idea here is to give you the links to objects and paints etc from the moodboards so you can see them in more detail, check prices, and shop around for items of a similar style and colour if there's anything you're not too keen on (keeping in mind you've already got lovely things we can use, like the mirrors). I've also included a few alternatives of my own.

PAINT

[Little Greene Mister David](#)

[Mylands FTT-017](#)

[Mylands FTT-012](#)

[Mylands Burlington Arcade](#)

[Mylands FTT-006](#)

[Graham & Brown Brazil](#)

LIGHTING

[Pink prism chandelier](#) / [More pink light fittings](#)

[Orange table lamp](#)

[Brass pendant](#) / [Brass chandelier](#)

[Tall pink floor lamp](#)

[Pink patterned lampshade](#)

[Light switch](#) / [Light switch](#) / [Light switch](#)

FITTINGS

[Vertical blinds in orange](#)

[Alternative style for blinds](#)

[Printer drawer shelves](#)

[Floating wooden shelves](#)

FURNISHINGS

[Wood frame sofa in blue or orange](#)

[Brass frame sofa in blue](#)

[Scandi chair in yellow \(also comes in velvet\)](#)

[Corner cabinet in pink \(would need a pair\)](#) / [Art Deco cabinet](#)

[Yellow bee cushion](#) / [More yellow cushions](#)

[Gold and pink rug \(also come in rectangle\)](#)

ART

[Jeffrey Czum prints](#)

[Paul Fuentes prints](#)

[Accidentally Wes Anderson prints](#)

[Yellow picture frame](#) / [Another yellow frame](#) / [One more yellow frame](#)

[Antique brass clear frames](#)

[Blue framed mirror](#)

OTHER

[Record player in pink](#) / [Record player on legs](#)

[Wooden record player](#) / [1930's radiogram](#)

[Suitcase with stickers](#) / [Vintage suitcases](#)

[Antique music stand](#) / [Press for Champagne button](#)

WHAT NEXT?

BUYING THINGS & GETTING STARTED

1. I come over and talk you through the ideas
2. We decide on the palette, paint and furnishings
3. You order some or all of it (including samples if required)
4. It all gets delivered and the transformation begins!